



RISING SEAS SUMMIT: Community Engagement Strategies

Emily E. Steinhilber

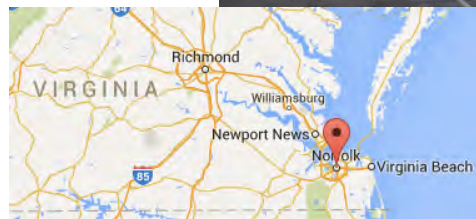
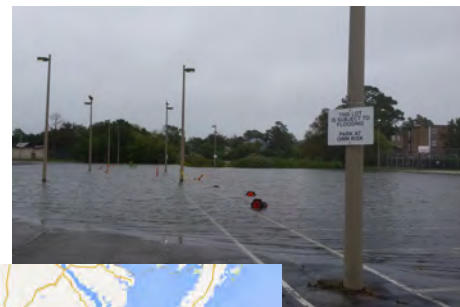
November 03, 2015



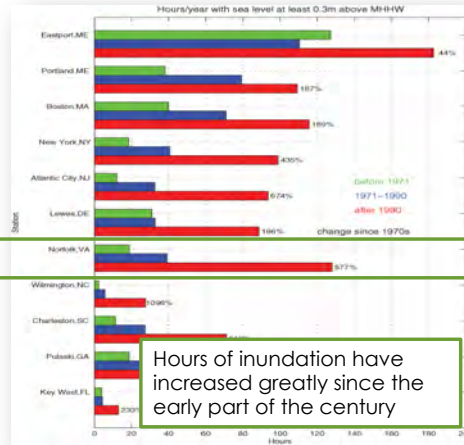
Research & Community @ ODU



- Research strategy focusing on regional strengths and issues – federal labs, the **port, Chesapeake Bay, military, health care.**
- Direct impact on the **economy and infrastructure of Hampton Roads**
- University as **non-partisan brokers of expertise**
- **Sea Level Rise**



Hampton Roads as a Test Bed



Hours of inundation have increased greatly since the early part of the century

Ezer, T., & Atkinson, L. P. (2014). Accelerated flooding along the US East Coast: on the impact of sea-level rise, tides, storms, the Gulf Stream, and the North Atlantic oscillations. *Earth's Future*, 2(8), 362-382.



Sea Level Rise: A Holistic Approach



Sea Level Rise Initiative



- **Interdisciplinary University Priority**
 - A member of the **local & global community**
 - Campus location & expertise
- **Climate Change and Sea Level Rise Initiative (CCSLRI)**
 - Est. in 2010,
 - Brings the University's and the region's foremost experts together to find solutions to the challenges facing Hampton Roads and other coastal regions globally.



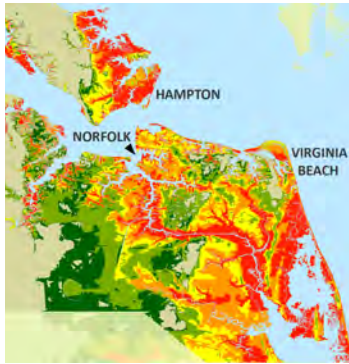
Sea Level Rise Research & Impact



- Socio-Economic Analysis & Modeling
- Economic Impacts
- Resilience of critical infrastructure
- Insurance and Risk Management
- Public Health
- Engineering and Construction Solutions



Sea Level Rise Research & Impact



- ODU researcher discovered “hot spot” of accelerated rise affecting Hampton Roads
- HUD National Disaster Resilience Grant
- Emergency Evacuation Modeling
- Impacts to Medically Fragile Populations
- Housing Resilience Modeling
- Communications & Stakeholder Engagement



Intergovernmental Pilot Project



Challenges and Opportunities



- Hampton Roads is **already impacted by sea level rise**; expected to continue into next century
- Without preparedness, sea level rise impact has serious **physical & economic consequences** for our region, but there are also opportunities in **thriving with the water**.
- Regional planning requires **coordination** at federal, state, local government and private sector levels
- Regional Economy is tied to the **water**:
 - Port of Virginia
 - Tourism
 - Military

Mission



- Convene **intergovernmental planning** organization
- Effectively coordinate **preparedness and resilience** planning
- Incorporate perspectives and concerns of region's **stakeholders**:
 - Military (Navy Lead) & Federal Agencies
 - Municipalities & State
 - NGOs
 - Private Sector & Industry
 - Citizens



Vision



- A regional “**whole of government and community**” approach to sea level rise preparedness and resiliency planning



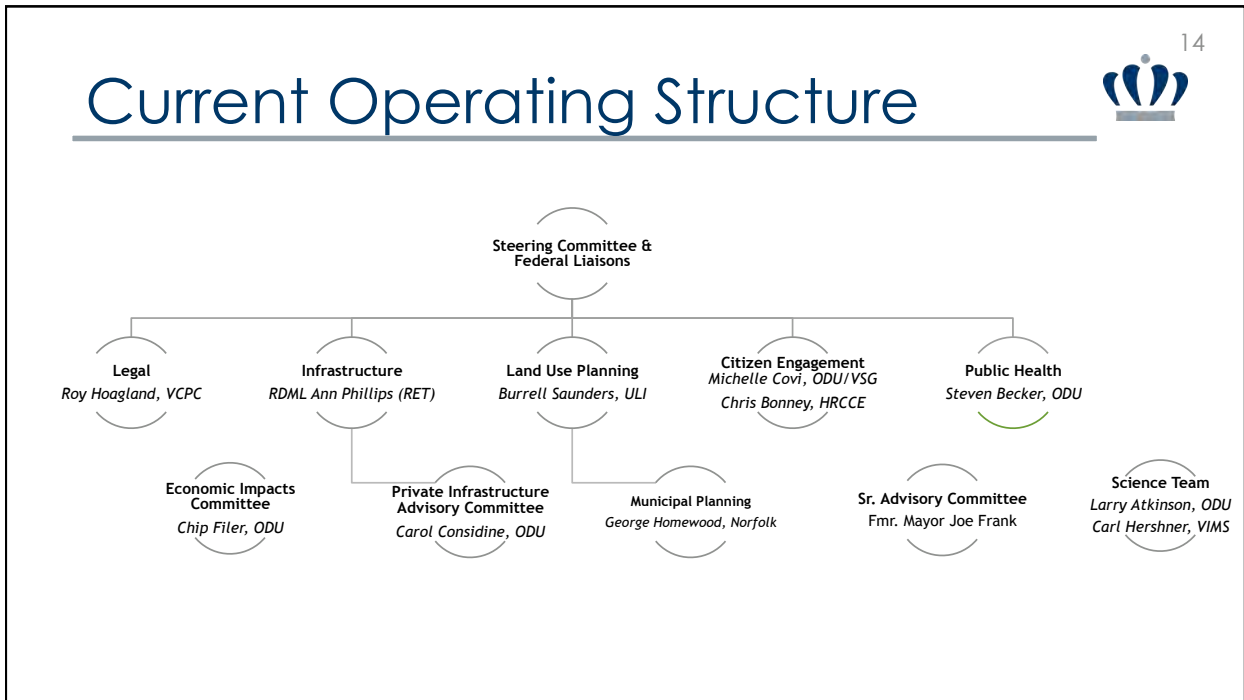
Goals & Strategy



University Role




- National hub of research on sea level rise and resiliency
- “Whole of government” coordination, planning and policy
- Neutral party to incubate intergovernmental solutions
- Serve as center for intellectual capital; develop solutions
- Identify region’s needs and take action
- Targeted technical services & research





RISING SEAS SUMMIT
Emily E. Steinhilber
esteinhi@odu.edu

